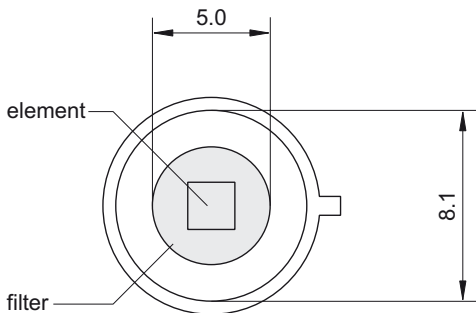
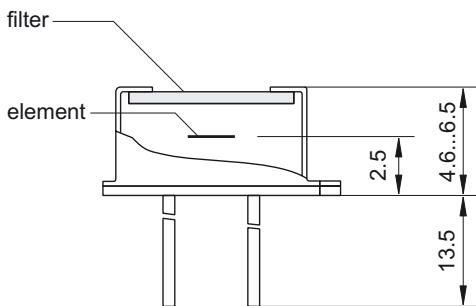
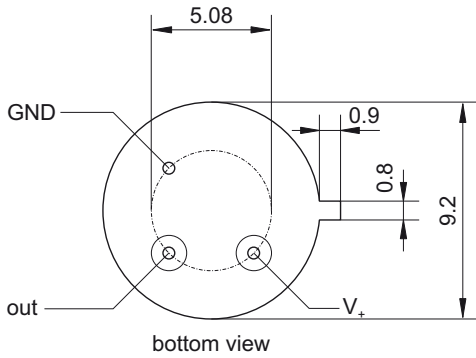


# LTA G2C10

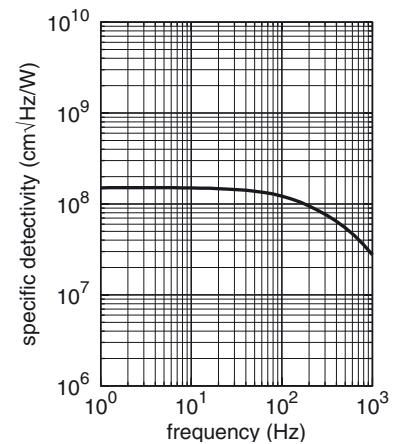
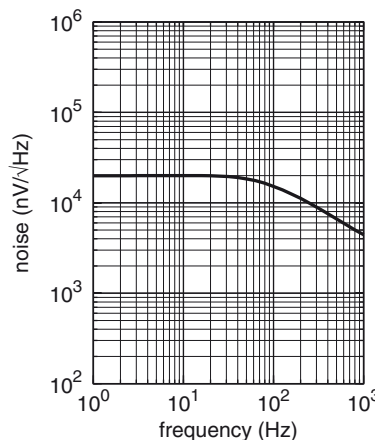
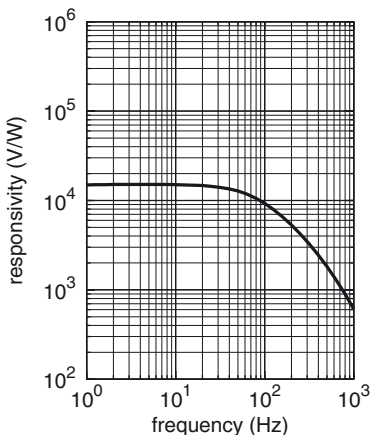
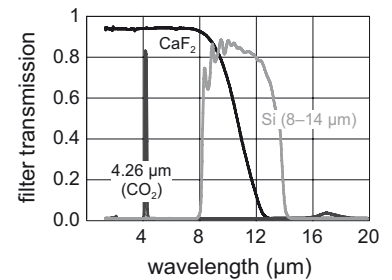
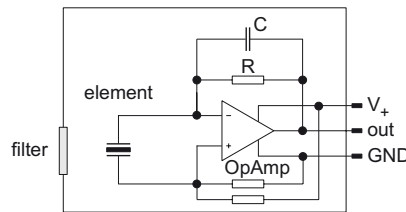
## Pyroelectric Single Element Detector for measurement application



Element size	2 mm × 2 mm
Aperture	5.0 mm
Filter <sup>1</sup>	custom-designed
Responsivity <sup>2,3</sup>	> 15000 V/W
Noise <sup>2</sup>	< 20000 nV/√Hz
Specific detectivity <sup>2,3</sup>	1.5 · 10 <sup>8</sup> cm√Hz/W
Offset voltage	< 5 mV
Operating voltage	5 V to 8 V
Housing	TO 39
Operating temperature	-20 to 70 °C
Storage temperature	-20 to 70 °C

<sup>1</sup> Other filters on request. <sup>2</sup> Frequency: 10 Hz, ambient temperature: 25 °C.

<sup>3</sup> Black body source temperature: 500 K, Filter transmission: 100 %.



Technische Änderungen vorbehalten. Technical details are subject to change. 24.06.19



Phone: +49 351 896 74-0  
 Fax: +49 351 896 74-99  
 Email: info@dias-infrared.de  
 Internet: www.dias-infrared.com

DIAS Infrared GmbH  
 Pforzheimer Straße 21  
 01189 Dresden  
 Germany