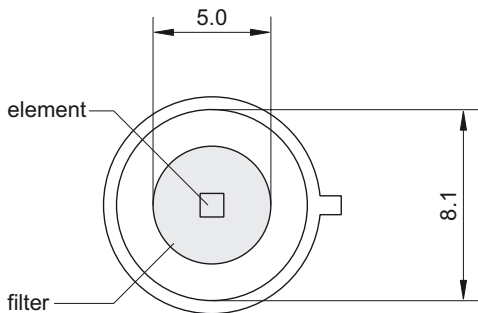
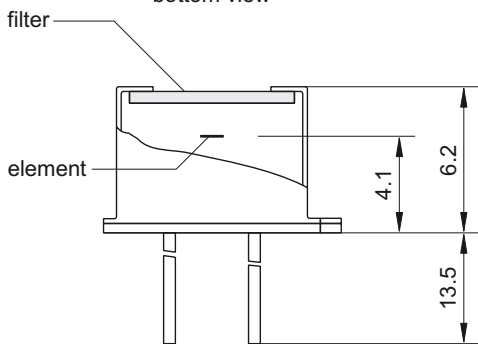
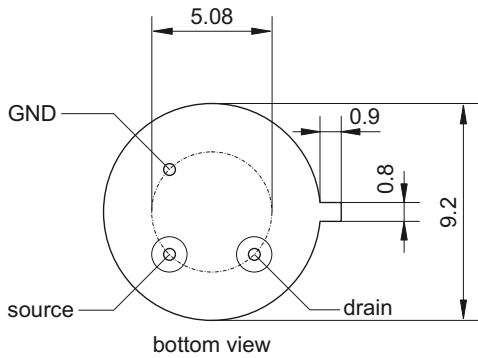


LT Q1

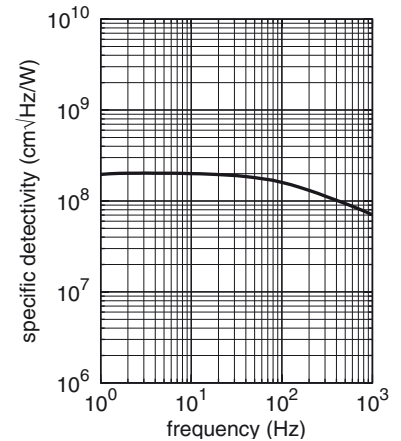
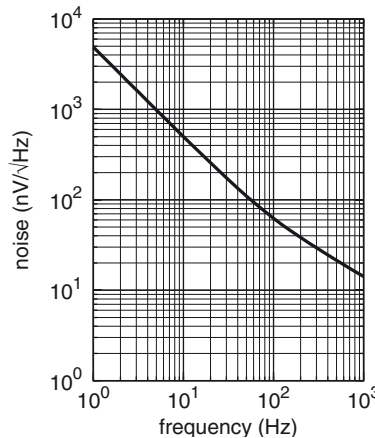
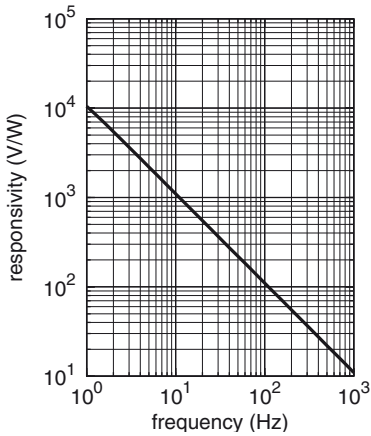
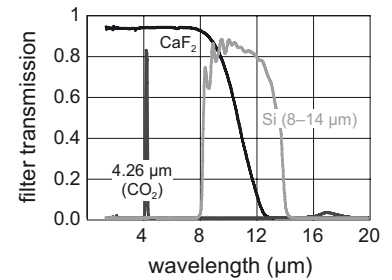
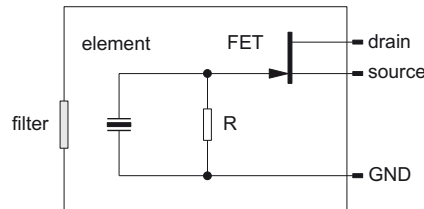
Pyroelectric Single Element Detector for measurement application



| | |
|---|---------------------------|
| Element size | 1 mm × 1 mm |
| Aperture | 5.0 mm |
| Filter¹ | custom-designed |
| Responsivity^{2,3} | > 1100 V/W |
| Noise² | < 500 nV/√Hz |
| Specific detectivity^{2,3} | 2·10 ⁸ cm√Hz/W |
| Offset voltage | 0.4 to 1.5 V |
| Operating voltage | 2 V to 18 V |
| Housing | TO 39 |
| Operating temperature | -20 to 70 °C |
| Storage temperature | -20 to 70 °C |

¹ Other filters on request. ² Frequency: 10 Hz, ambient temperature: 25 °C.

³ Black body source temperature: 500 K, Filter transmission: 100 %.



Technische Änderungen vorbehalten. Technical details are subject to change. 24.06.19



Phone: +49 351 896 74-0
 Fax: +49 351 896 74-99
 Email: info@dias-infrared.de
 Internet: www.dias-infrared.com

DIAS Infrared GmbH
 Pforzheimer Straße 21
 01189 Dresden
 Germany